



# TAI-SAW TECHNOLOGY CO., LTD.

No. 3, Industrial 2nd Rd., Ping-Chen Industrial District,  
Taoyuan, 324, Taiwan, R.O.C.

TEL: 886-3-4690038 FAX: 886-3-4697532

E-mail: [tstsales@mail.taisaw.com](mailto:tstsales@mail.taisaw.com) Web: [www.taisaw.com](http://www.taisaw.com)

## Approval Sheet For Product Specification

Issued Date:

Product Name: IF SAW Filter 140 MHz (SMD 13.3mmX6.5mm)

TST Parts No.:TB0541A

Customer Parts No.:\_\_\_\_\_

Company: _____
Division: _____
Approved by : _____
Date: _____

Checked by: \_\_\_\_\_ Andy Lee

Approval by: \_\_\_\_\_ Francis Chen

Date: \_\_\_\_\_ 2007/7/20



# TAI-SAW TECHNOLOGY CO., LTD.

No. 3, Industrial 2nd Rd., Ping-Chen Industrial District,  
Taoyuan, 324, Taiwan, R.O.C.

TEL: 886-3-4690038 FAX: 886-3-4697532

E-mail: [tstsales@mail.taisaw.com](mailto:tstsales@mail.taisaw.com) Web: [www.taisaw.com](http://www.taisaw.com)

## IF SAW Filter 140 MHz SMD 13.3mmX6.5mm

MODEL NO.: TB0541A

Rev. No.1

### A. MAXIMUM RATING:

1. Operating Temperature: -40 °C ~ +85 °C
2. Storage Temperature: -40 °C ~ +85 °C
3. Input Power Level: 10dBm

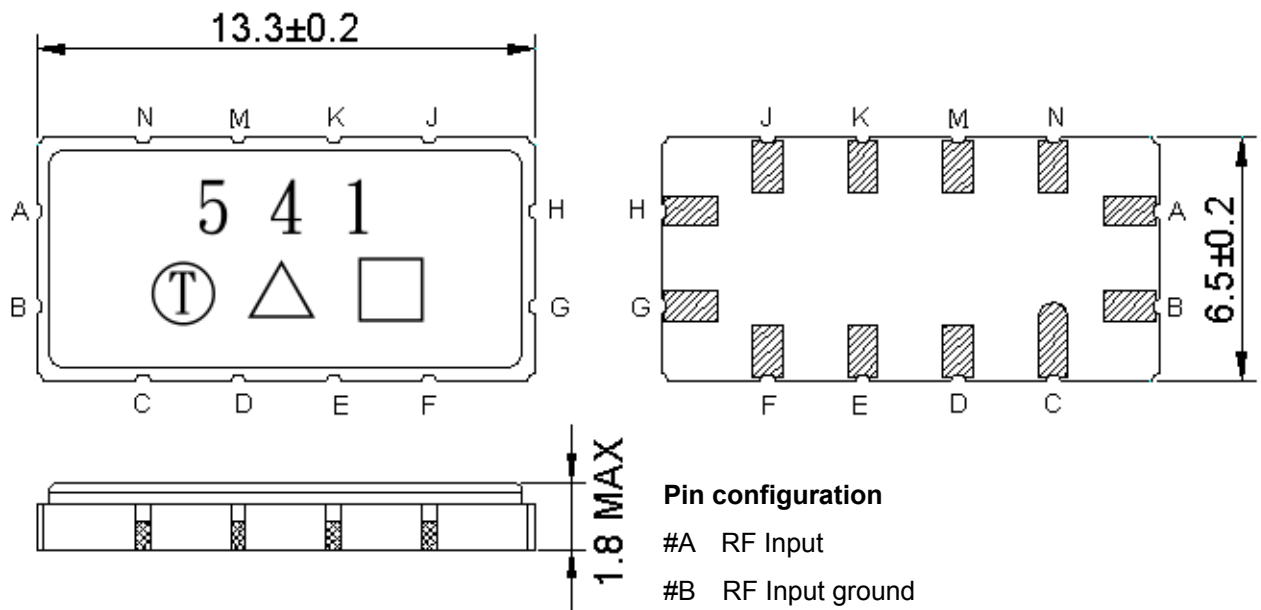
RoHS Compliant  
Lead free  
Lead-free soldering

### B. Characteristics :

1. Ambient Temperature: 25 °

Characteristics	Value			Note.
	Min.		Max.	
Center frequency $F_c$ MHz	139.6	140	140.4	-
Maximum Insertion loss I.L. dB	-	6.8	7.5	-
1dB Bandwidth MHz	5.80	5.95	-	-
3dB Bandwidth MHz	6.85	6.97	-	-
40dB Bandwidth MHz	-	10.40	11.10	-
Passband Ripple ( $F_c \pm 2.4\text{MHz}$ ) MHz	-	0.40	1.00	-
Phase Linearity ( $F_c \pm 2.4\text{MHz}$ ) (P-P) deg	-	3.6	14	-
Group Delay Ripple ( $F_c \pm 2.4\text{MHz}$ ) nS	-	60	200	-
Group Delay at $F_c$ uS	-	0.94	-	-
Temp Coefficient ppm/°C	-	-18	-	-

**C.OUTLINE DRAWING:**



**Pin configuration**

- #A RF Input
- #B RF Input ground
- #G RF Output
- #H RF Output ground
- #C,D,E,F,J,K,M,N To be ground
- : Week Code (Follow the table from planner each year)
- Unit : mm
- △ : Product / Year Code

Year	2005 2009	2006 2010	2007 2011	2008 2012
Product Code	B	b	<u>B</u>	<u>b</u>

## D. Frequency Characteristics :

### 1. S21 Response

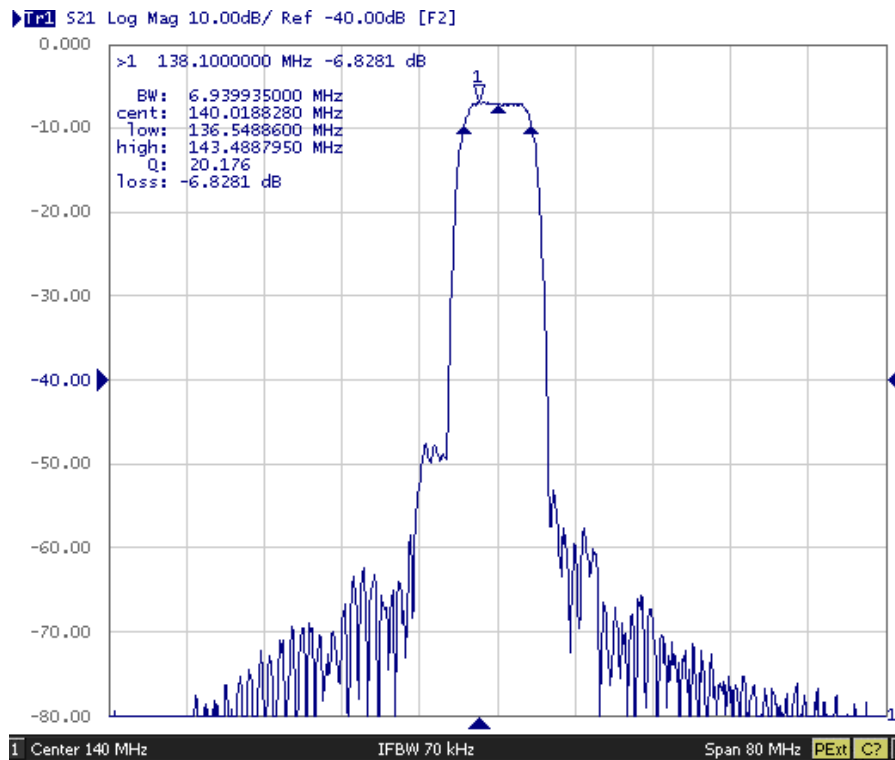


Fig1. Horizontal: 8MHz/Div Vertical: 10dB/Div

### 2. Pass band Ripple and Group Delay Ripple

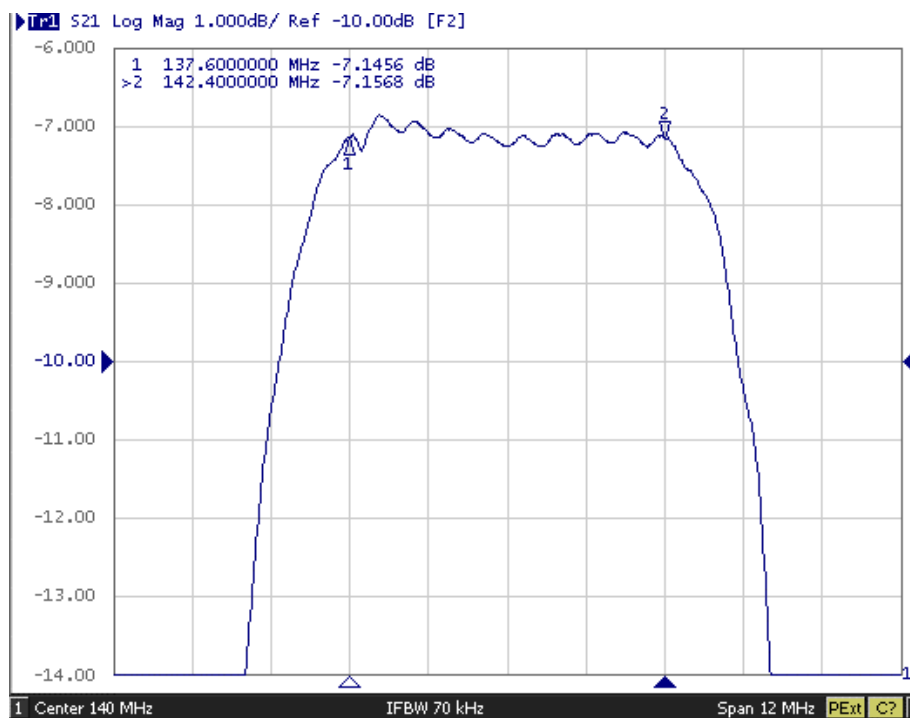


Fig2. Horizontal: 1.2MHz/Div; Vertical: 1dB/Div,

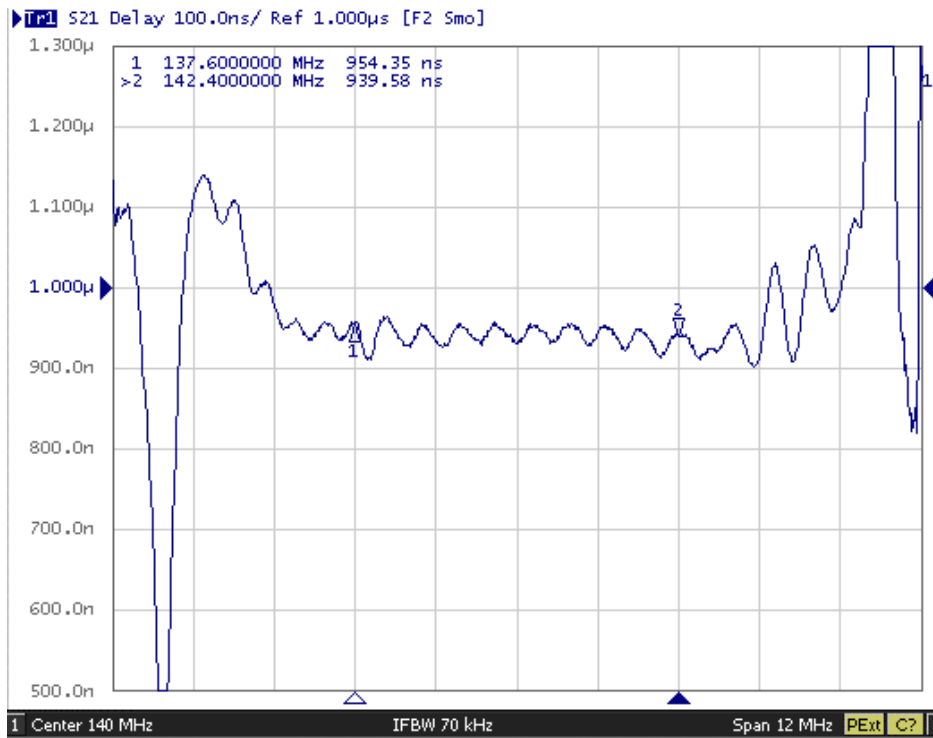
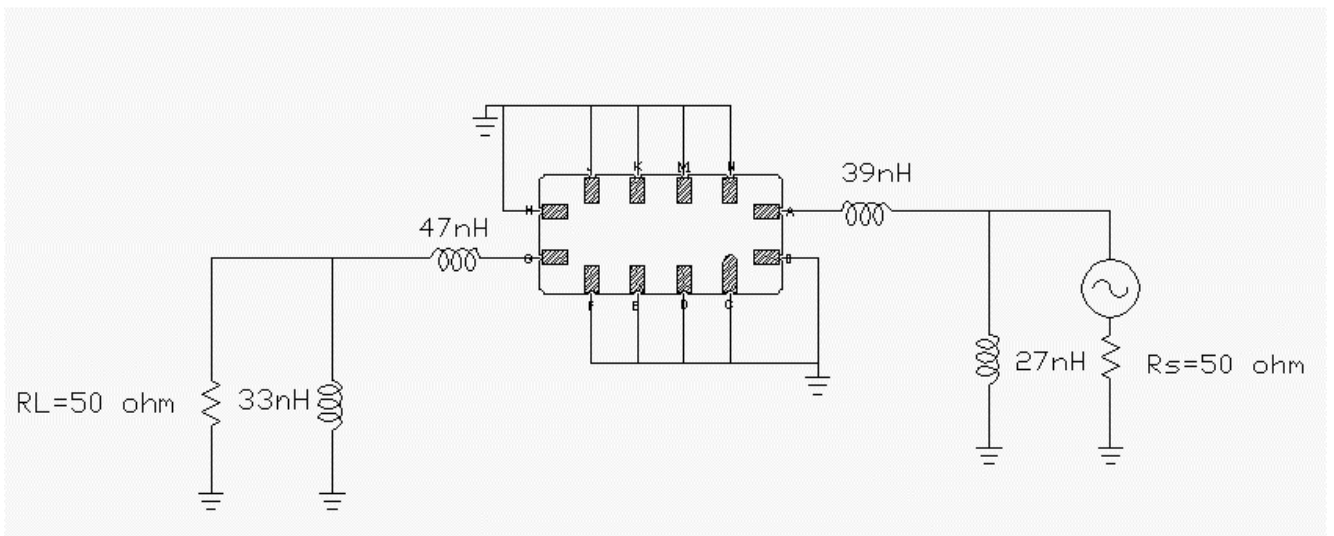
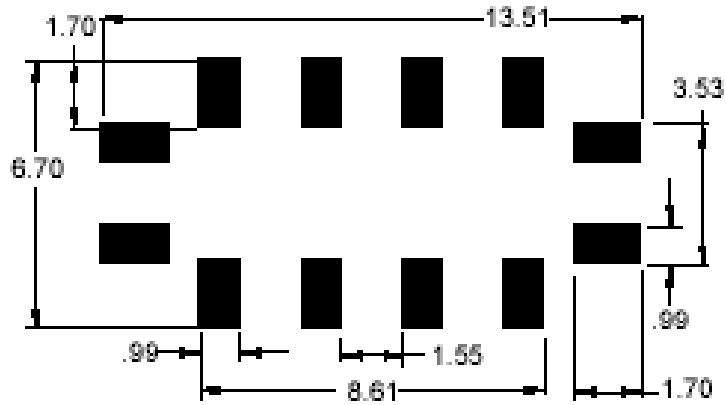


Fig3. Horizontal: 1.2MHz/Div; Vertical: 100nS/Div,

### E. TEST FIXTURE :

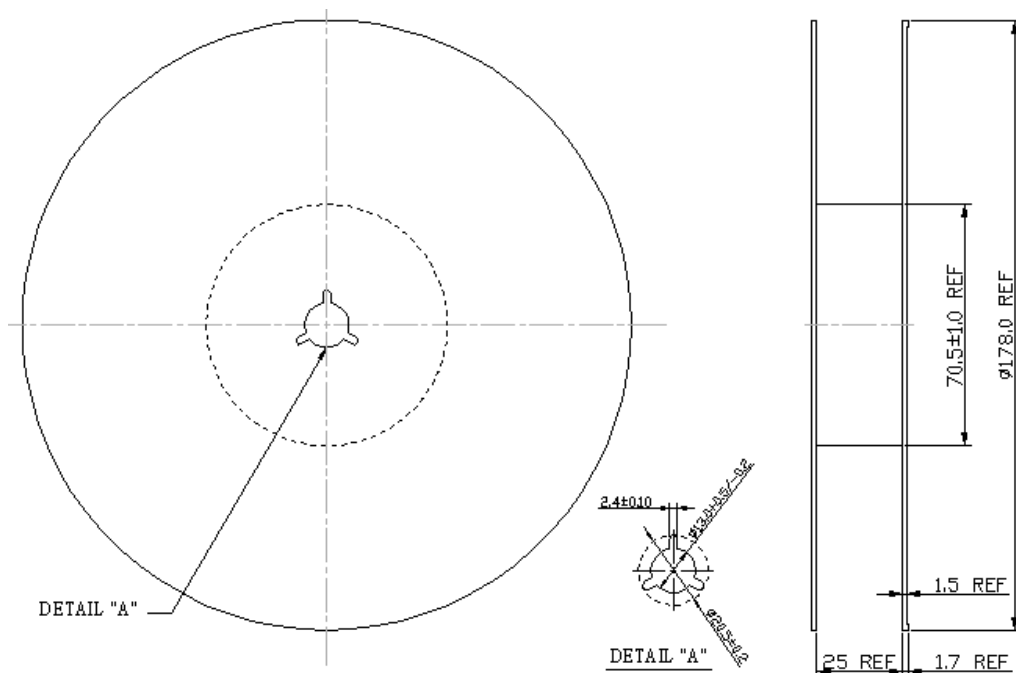


## F. PCB FOOTPRINT



## G. PACKING:

### 1. REEL DIMENSION



2. TAPE DIMENSION

